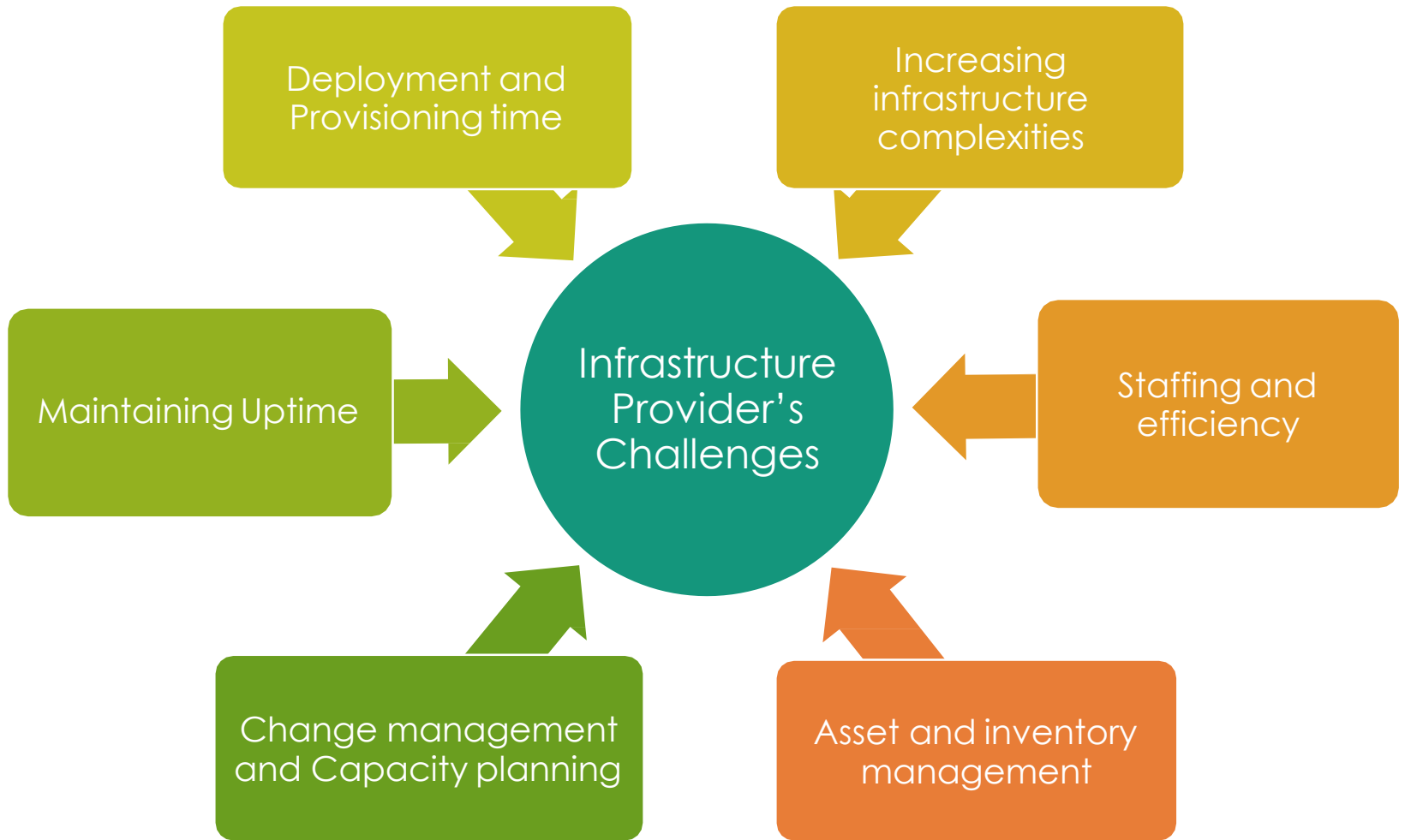


MANAGING  
INFRASTRUCTURE THE RIGHT  
WAY, MAKING DEDICATED  
AS FLEXIBLE AS CLOUD.



Pavel Guralnik | VP of Business Development

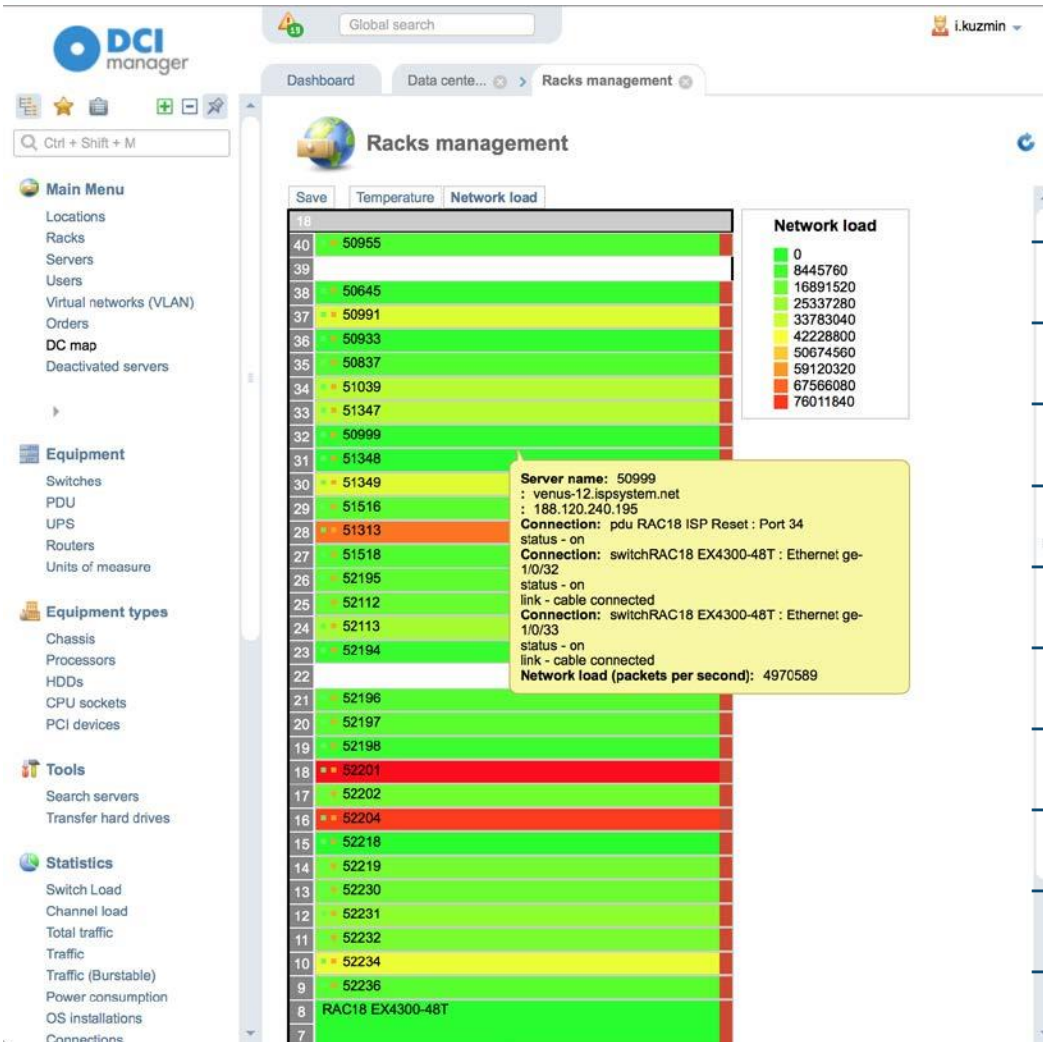




- Slow deployment
- No possibility to quickly clone or migrate
- Unsatisfactory asset inventory and tracking

- Unclear energy consumption potential
- Segmented solutions to manage everything

- Over-engineered networks
- Too many man-hours spent
- Funding down the drain



- Intuitive interface
- Monitoring and Diagnostics
- Inventory and Assets
- Power consumption
- PDU, switches, servers control
- DC map
- Multiple location management
- Vendor agnostic
- Business automation integrated
- Network and IP management



- Clear capacity overview allowed to optimize server distribution, freeing up 5-6 racks per location.
- Much quicker deployment, cloning, migration. 284 man-hours are saved in the first month over 3 locations.
- Customer loyalty went up, as The Cloud became much more scalable 😊 Support reaction time went down by 18%, as it became easier for operators to perform most tasks.
- Engineering infrastructure was made straight-forward, with VLAN and IP management taking Clicks.
- Overall Electricity spending went down by 4.8% in the first month.
- Customers obtained an easy and secure interface to manage their own servers and infrastructure remotely.
- Monitoring made it easy to determine which equipment is most efficient, and which needs to go.



- Inventory management of all three locations allowed to streamline orders of asset.
- Where every asset is located became transparent.
- Clear reports for management, engineering teams, finance and accounting = full accountability.
- All three locations are managed through a single interface, giving a clearer strategic overview, allowing to focus development.



- Environmental monitoring uncovered over-cooling of some areas, which led to Power consumption optimization, reducing electricity spending by 2% just like that.
- Monitoring also allowed to create a plan for free cooling restructuring!

Thank you for your attention!

## DCImanager Enterprise – Data center under control!

### Information infrastructure

- Data-center map
- Inventory control

### Engineering infrastructure

- Power supply
- Cooling

### Network infrastructure

- VLAN management
- Routing